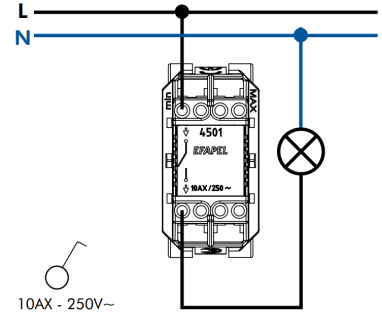




45011 S
ΔΙΑΚΟΠΤΗΣ ΑΠΛΟΣ
2 MODULE



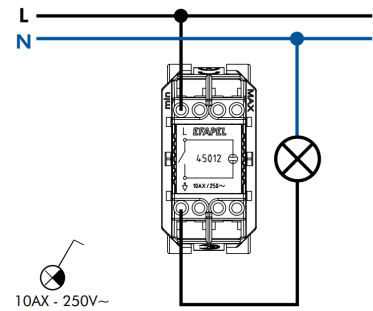
45010 S
ΔΙΑΚΟΠΤΗΣ ΑΠΛΟΣ
1 MODULE



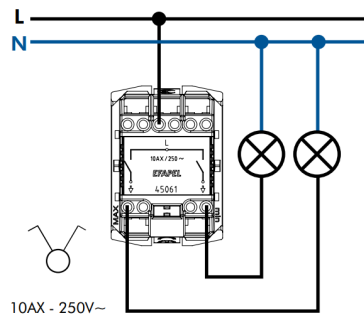
45012 S
ΔΙΑΚΟΠΤΗΣ ΑΠΛΟΣ
ΜΕ ΦΩΣ 2 MODULE



45015 S
ΔΙΑΚΟΠΤΗΣ ΑΠΛΟΣ
ΜΕ ΦΩΣ 1 MODULE



45061 S
ΔΙΑΚΟΠΤΗΣ Κ/Ρ
2 MODULE



CHARACTERISTICS FOR SWITCHES AND BUTTONS

■ **Technical Thermoplastic Mechanisms - non-conductive resistant material.**

■ **Control Devices**

- 10A - 250V~ - connections with **screw terminals** and **screwless terminals**. It allows the usage of rigid and flexible cable.
- In accordance with EN 60669-1 Standard, tested according 19.3:

Relationship between rated current of the switch and rated power of the SBL circuit	
Rated current of the switch, I _n [A]	Rated power of the SBL circuit [W]
I _n ≤ 10	100
10 < I _n ≤ 13	150
13 < I _n ≤ 16	200
16 < I _n ≤ 20	250

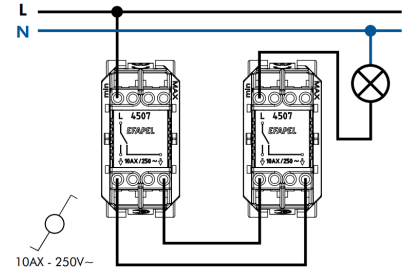
SBL - Self Ballasted Lamp (CFL or LED)



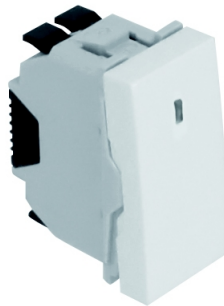
45070 S
ΔΙΑΚΟΠΤΗΣ A/R
1 MODULE



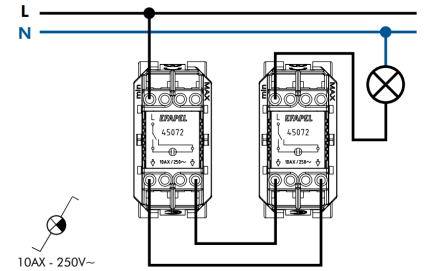
45071 S
ΔΙΑΚΟΠΤΗΣ A/R
2 MODULE



45072 S
ΔΙΑΚΟΠΤΗΣ A/R
ΜΕ ΦΩΣ 2 MODULE



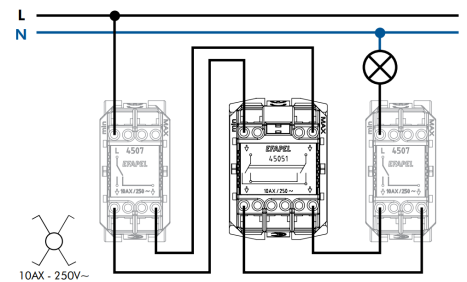
45074 S
ΔΙΑΚΟΠΤΗΣ A/R
ΜΕ ΦΩΣ 1 MODULE

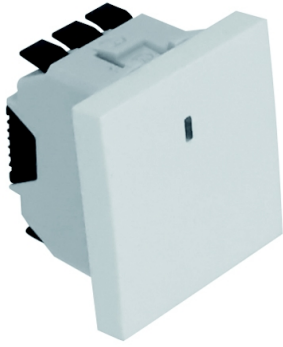


45051 S
ΔΙΑΚΟΠΤΗΣ A/R ΜΕΣΑΙΟΣ
2 MODULE



45050 S
ΔΙΑΚΟΠΤΗΣ A/R ΜΕΣΑΙΟΣ
1 MODULE





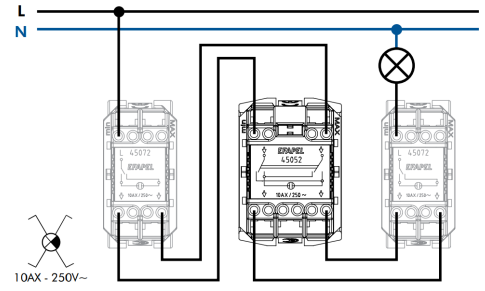
45052 S

ΔΙΑΚΟΠΤΗΣ Α/Ρ ΜΕΣΑΙΟΣ
ΜΕ ΦΩΣ 2 MODULE



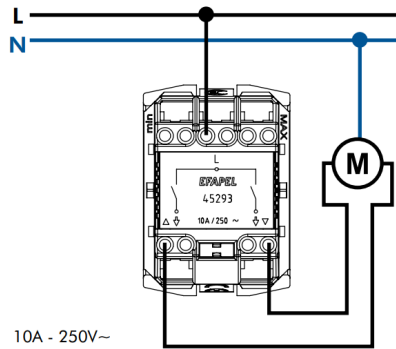
45053 S

ΔΙΑΚΟΠΤΗΣ Α/Ρ ΜΕΣΑΙΟΣ
ΜΕ ΦΩΣ 1 MODULE



45293 S

ΔΙΑΚΟΠΤΗΣ ΡΟΛΛΩΝ
2 MODULE



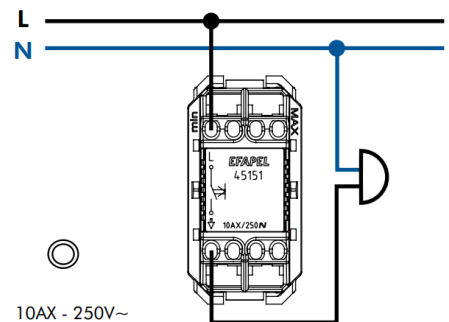
45151 S

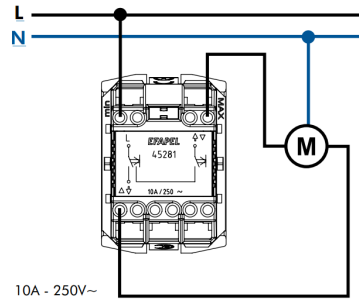
ΜΠΟΥΤΟΝ 2 MODULE



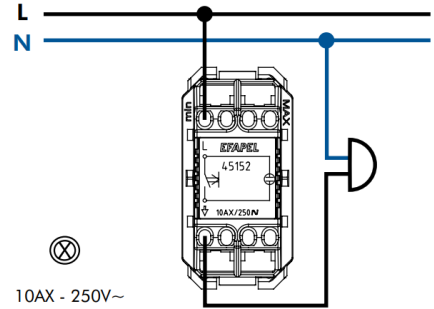
45161 S

ΜΠΟΥΤΟΝ 1 MODULE



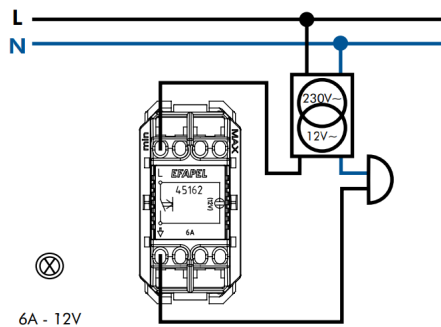
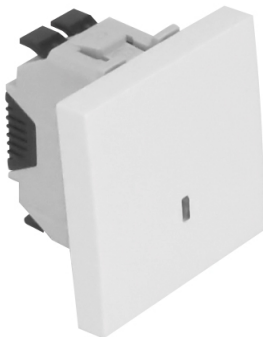


45281 S
ΜΠΟΥΤΟΝ ΡΟΛΛΩΝ
2 MODULE

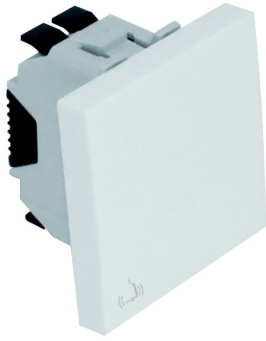


45152 S
ΜΠΟΥΤΟΝ ΜΕ ΦΩΣ 250V
2 MODULE

45160 S
ΜΠΟΥΤΟΝ ΜΕ ΦΩΣ 250V
1 MODULE

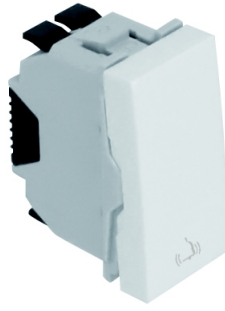


45162 S
ΜΠΟΥΤΟΝ ΜΕ ΦΩΣ 12V
2 MODULE



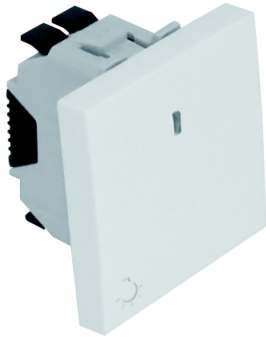
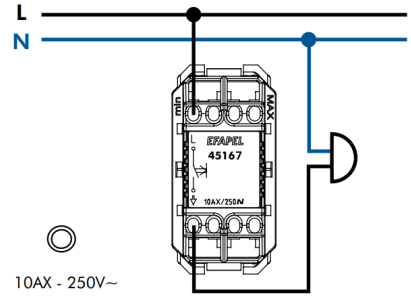
45177 S

ΜΠΟΥΤΟΝ ΜΕ ΣΗΜΑ ΚΟΥΔΟΥΝΙ 2 MODULE



45167 S

ΜΠΟΥΤΟΝ ΜΕ ΣΗΜΑ ΚΟΥΔΟΥΝΙ 2 MODULE



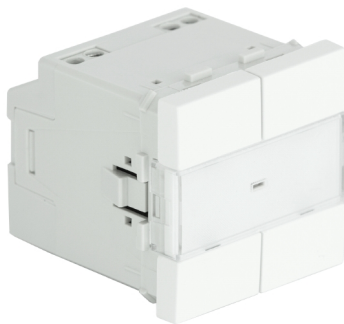
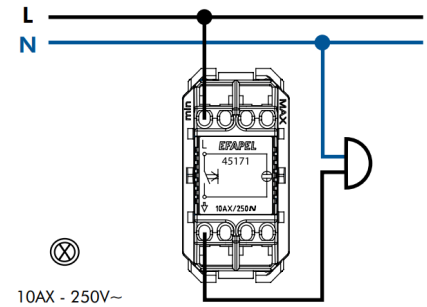
45172 S

ΜΠΟΥΤΟΝ ΜΕ ΦΩΣ ΚΑΙ ΣΗΜΑ ΛΥΧΝΙΑΣ 2 MODULE



45171 S

ΜΠΟΥΤΟΝ ΜΕ ΦΩΣ ΚΑΙ ΣΗΜΑ ΛΥΧΝΙΑΣ 1 MODULE

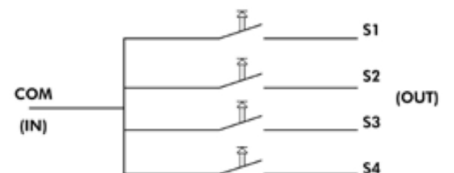


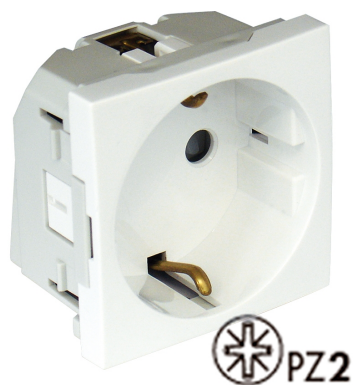
45164 S

ΜΠΟΥΤΟΝ ΗΛΕΚΤΡΟΝΙΚΟ 4 ΠΛΗΚΤΡΩΝ 2 MODULE

CHARACTERISTICS

- Maximum power dissipation: **60mW (DC 12V 50mA)**;
- Maximum voltage: **32V_{DC}**;
- Insulation resistance: $\geq 100M\Omega$;
- Dielectric rigidity: AC 250V~ 50Hz/ 1 min.;
- Operating temperature: -25°C to +70°C.
- Maximum relative humidity: (40°C) $\leq 95\%$.
- Contact resistance: $\leq 40m\Omega$;
- Outputs: 4NO.





45129 S

ΠΡΙΖΑ ΣΟΥΚΟ ΑΣΦΑΛΕΙΑΣ
ΟΡΙΖΟΝΤΙΑ 2 MODULE



45132 S

ΠΡΙΖΑ ΣΟΥΚΟ ΑΣΦΑΛΕΙΑΣ
ΚΑΘΕΤΗ 2 MODULE



45128 S

ΠΡΙΖΑ ΣΟΥΚΟ ΚΑΠΑΚΙ
ΑΣΦΑΛΕΙΑΣ ΟΡΙΖΟΝΤΙΑ
2 MODULE



45132 SVM

ΠΡΙΖΑ ΣΟΥΚΟ ΑΣΦΑΛΕΙΑΣ
ΚΑΘΕΤΗ 2 MODULE

CHARACTERISTICS FOR SOCKETS

■ **Technical Thermoplastic Mechanisms - non-conductive resistant material.**

■ **Power Sockets**

■ Schuko Socket:

- 16A - 250V~ - Connections with **screw terminals** or **screwless terminals**. It allows the usage of rigid and flexible cable.
- In accordance with IEC 60884-1; DIN VDE 0620-1 Standards.



45554 S
ΠΡΙΖΑ R-TV
ΤΕΡΜΑΤΙΚΗ
2 MODULE

45564 S
ΠΡΙΖΑ R-TV
ΔΙΕΛΕΥΣΕΩΣ
2 MODULE

■ R - TV - SAT SOCKETS (IMPEDANCE OF 75 OHM)

EQUIVALENT	OUTPUTS		DERIVATION LOSSES (dB) ^A										INSERTION LOSSES dB	INSULATION BETWEEN OUTPUTS dB ^C	RETURN LOSSES dB ^B
	CONNECTOR/OUTPUTS	RETURN	BI	SUB BAND	FM	S. LOW	BIII /DAB	S. HIGH HYPER	UHF	SAT					
										4-47 MHz	47-68 MHz	68-80 MHz			
TERMINAL 45554 S	IEC MALE TV	5,8 ¹⁾	6,0 ¹⁾	6,0 ¹⁾	--	6,0 ¹⁾	6,0 ¹⁾	6,0 ¹⁾	6,4 ¹⁾	--	--	--	>20	>18	
	IEC FEMALE R	--	--	--	8,2 ¹⁾	--	--	--	--	--	--				
PASSAGE 45564 S	IEC MALE TV	8,2 ¹⁾	8,2 ¹⁾	8,2 ¹⁾	--	8,0 ¹⁾	7,4 ¹⁾	7,4 ¹⁾	8,4 ¹⁾	--	--	1,6 ¹⁾	>20	>18	
	IEC FEMALE R	--	--	--	8,8 ¹⁾	--	--	--	--	--	--				



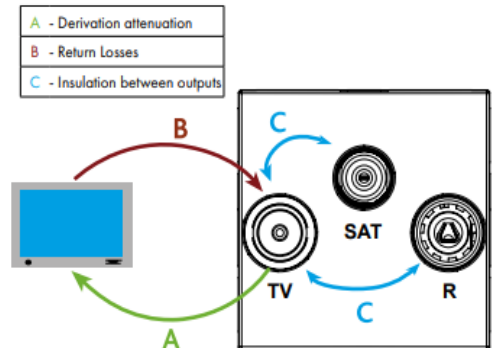
45555 S
ΠΡΙΖΑ R-TV-SAT
ΤΕΡΜΑΤΙΚΗ
2 MODULE

45565 S
ΠΡΙΖΑ R-TV-SAT
ΔΙΕΛΕΥΣΕΩΣ
2 MODULE

■ R - TV - SAT SOCKETS (IMPEDANCE OF 75 OHM)

UNREAL	OUTPUTS		DERIVATION LOSSES (dB) ^A										INSERTION LOSSES dB	INSULATION BETWEEN OUTPUTS dB ^C	RETURN LOSSES dB ^B	DC CURRENT PASSAGE CONNECTOR/ mA (DC)
	CONNECTOR/OUTPUTS	RETURN	BI	SUB BAND	FM	S. LOW	BIII /DAB	S. HIGH HYPER	UHF	SAT						
										4-47 MHz	47-68 MHz	68-80 MHz				
TERMINAL 45555 S	IEC MALE TV	6,2 ¹⁾	6,2 ¹⁾	6,2 ¹⁾	6,2 ¹⁾	6,0 ¹⁾	6,2 ¹⁾	5,8 ¹⁾	8,6 ¹⁾	--	--	--	>12	>18	--	
	IEC FEMALE R	15	15	15	15	15	15	15	--	--	--				--	--
	F FEMALE SAT	--	--	--	--	--	--	--	--	5,6 ¹⁾	6,4 ¹⁾				[SAT-IN] 500mA	
PASSAGE 45565 S	IEC MALE TV	10,0 ¹⁾	10,0 ¹⁾	10,0 ¹⁾	10,0 ¹⁾	9,6 ¹⁾	10,0 ¹⁾	10,0 ¹⁾	10,0 ¹⁾	--	--	<3,6	>12	>18	--	
	IEC FEMALE R	20,0 ¹⁾	20,0 ¹⁾	20,0 ¹⁾	20,0 ¹⁾	20,0 ¹⁾	20,0 ¹⁾	20,0 ¹⁾	20,0 ¹⁾	--	--				--	--
	F FEMALE SAT	--	--	--	--	--	--	--	--	11,0 ¹⁾	8,6 ¹⁾				[SAT-IN] 500mA	

SERIES CONNECTION			45554 S	⊖	⊕	
			45555 S	⊖	⊕	⊕
			45564 S	⊖	⊕	
			45565 S	⊖	⊕	⊕





45971 S
ΔΙΠΛΗ ΘΕΣΗ RJ45
2 MODULE



45976 S
ΜΟΝΗ ΘΕΣΗ RJ45
2 MODULE

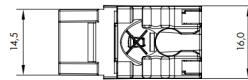


45977 S
ΜΟΝΗ ΘΕΣΗ RJ45
1 MODULE

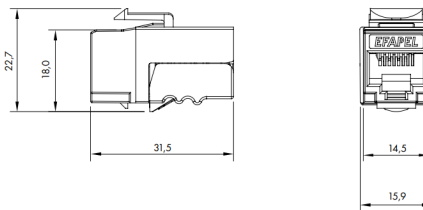
DIMENSIONS (mm)



21975
RJ45 CAT 5E 100MHZ



21978
RJ45 CAT 6 POE 250MHZ



82021
RJ45 CAT 6A POE 500MHZ



21972
RJ11 CAT 2

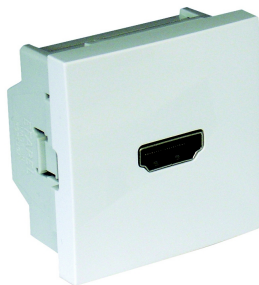
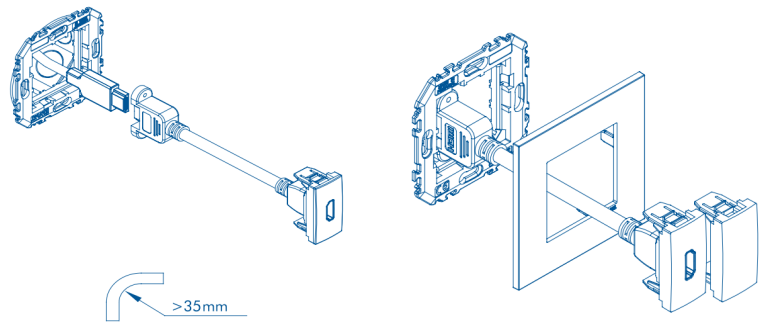
CONNECTIONS

TERMINALS	EIA / TIA 568A		EIA / TIA 568B	
	PAR	CABLE COLOR	PAR	CABLE COLOR
PIN 5	1	White / Blue	1	White / Blue
PIN 4		Blue		Blue
PIN 1	2	White / Green	2	White / Orange
PIN 2		Green		Orange
PIN 3	3	White / Orange	3	White / Green
PIN 6		Orange		Green
PIN 7	4	White / Brown	4	White / Brown
PIN 8		Brown		Brown



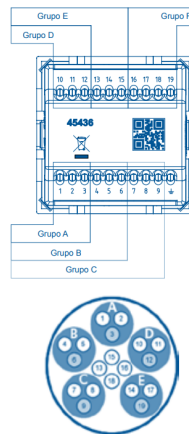
45435 S

ΠΡΙΖΑ HDMI ΜΕ ΚΑΛΩΔΙΟ
1 MODULE

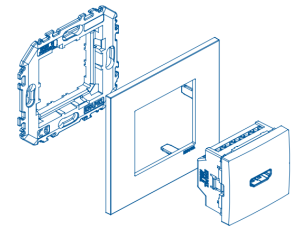


45436 S

ΠΡΙΖΑ HDMI 2 MODULE



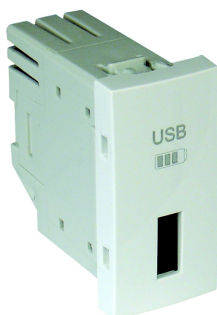
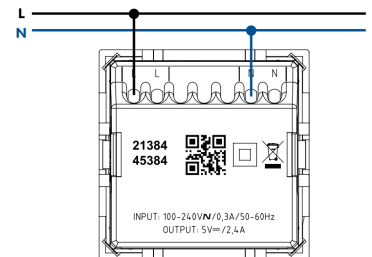
Pin	Group	
Pin 1	TMD5 Data2+	
Pin 2	TMD5 Data2 Data Shield	Group A Red
Pin 3	TMD5 Data2-	
Pin 4	TMD5 Data1+	
Pin 5	TMD5 Data1 Data Shield	Group B Green
Pin 6	TMD5 Data1-	
Pin 7	TMD5 Data0+	
Pin 8	TMD5 Data0 Data Shield	Group C Blue
Pin 9	TMD5 Data0-	
Pin 10	TMD5 Clock+	
Pin 11	TMD5 Clock Data Shield	Group D Brown
Pin 12	TMD5 Clock-	
Pin 13	CEC	
Pin 14	Reserved, HEC Data - (Optional, 1.4+ with Ethernet channel)	Group E
Pin 15	SCA (DDC)	
Pin 16	SDA (DDC)	
Pin 17	DDC/CEC Ground	Group F
Pin 18	+5V Power	
Pin 19	Hot Plug Detect, HEC Data + (Optional, 1.4+ with Ethernet channel)	



45384 S

ΠΡΙΖΑ ΦΟΡΤΙΣΗΣ ΔΙΠΛΗ
USB 2.4A 2 MODULE

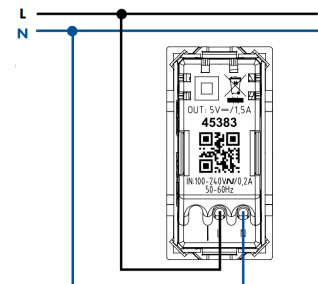
- DUAL USB TYPE A
- INPUT VOLTAGE 100-240V 50-60HZ
- OUTPUT VOLTAGE DC 5V
- OUTPUT CURRENT **2.4A MAX**
- EFFICIENCY 80%
- STANDBY <0.1W

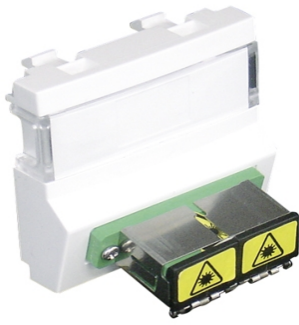


45383 S

ΠΡΙΖΑ ΦΟΡΤΙΣΗΣ ΜΟΝΗ
USB 1.5A 1 MODULE

- SINGLE USB TYPE A
- INPUT VOLTAGE 100-240V 50-60HZ
- OUTPUT VOLTAGE DC 5V
- OUTPUT CURRENT **1.5A MAX**
- EFFICIENCY 80%
- STANDBY <0.1W





CHARACTERISTICS

- Durability: 500 circles
- Tension losses: 10 kgf
- Insertion losses: <0.2 dB (single mode)
- Storage temperature: -40 to 80 C

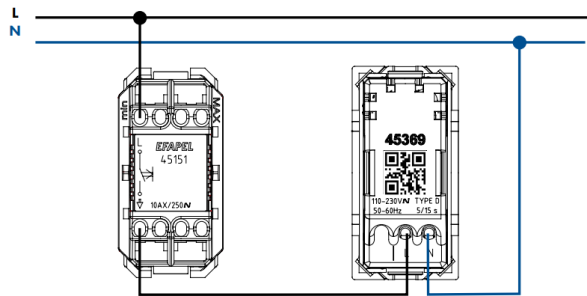
45448 S

ΠΡΙΖΑ ΖΕΥΞΗΣ ΟΠΤΙΚΩΝ
ΙΝΩΝ 2 MODULE



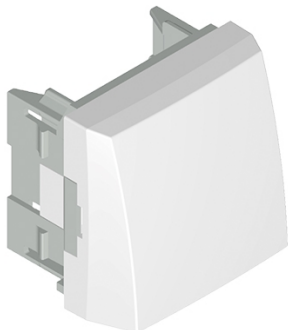
45369 S

ΗΛΕΚΤΡΟΝΙΚΟ BUZZER
1 MODULE



CHARACTERISTICS

- Operating voltage: **100-240V~**
- Frequency: **50/60Hz**.
- Type: D (type D sound signal).
- Acoustic level: 80 dB at 1m.
- Operating cycle: intermittent 5/15s.
- Operating temperature: -10° C to 45° C.

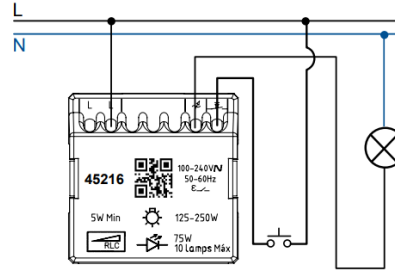


CHARACTERISTICS

- BLIND POINT FOR CONNECTIONS
- 4 PINS FOR OUTPUT
- USE IN AUDIO SYSTEMS
- VOLTAGE INSULATION 250V
- CURRENT MAXIMUM 10A

45174 S

ΤΕΡΜΑΤΙΚΗ ΘΕΣΗ
4 ΚΑΛΩΔΙΩΝ
2 MODULE



45216 S

ΡΥΘΜΙΣΤΗΣ DIMMER ΠΕΡΙΣΤΡΟΦΙΚΟΣ 5-250W 2 MODULE

MAXIMUM RECOMMENDED LOADS								
	Voltage	[P]						
REF. 45216 S	230V~	5W	250W	250W	250VA	250VA	75W or 10 lamps (Máx.)	75W or 10 lamps (Máx.)
100-240V~ 50/60HZ	110V~	5W	125W	125W	125VA	125VA	75W or 10 lamps (Máx.)	75W or 10 lamps (Máx.)

OPERATION

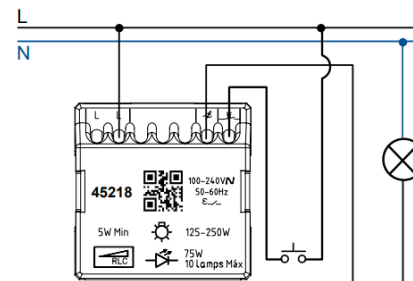
- Allows to command ON / OFF and the regulation of the dimming of a lamp or set of lamps:
 - Regulation of the dimming by rotation or through continuous pressure on the button;
 - Short button press, switches ON/OFF position..

CHARACTERISTICS - TECHNICAL

- Power: **100-240V~, 50/60 Hz**;
- Consumption: < 200mW;
- Operating temperature: -10°C to 45°C;
- **Note:** Maximum recommended number of lamps per circuit = 10; In the event of excessive load, short-circuit, inadequate current (dimnable lamps or a mixture of various types of dimmable lamps) - the frontal white LED will start flashing.

CHARACTERISTICS - DEVICE

- No need for a neutral line (directly replaces a Single Pole Switch);
- Compatible with RLC circuits (R, RL and RC);
- Memorizes last lighting level;
- Allows to control at more than one point (switching circuit) with the use of Rocker switches (NO).



45218 S

ΡΥΘΜΙΣΤΗΣ DIMMER ΠΛΗΚΤΡΩΝ 5-250W 2 MODULE

MAXIMUM RECOMMENDED LOADS								
	Voltage	[P]						
REF. 45218 S	230V~	5W	250W	250W	250VA	250VA	75W or 10 lamps (Máx.)	75W or 10 lamps (Máx.)
100-240V~ 50/60HZ	110V~	5W	125W	125W	125VA	125VA	75W or 10 lamps (Máx.)	75W or 10 lamps (Máx.)

OPERATION

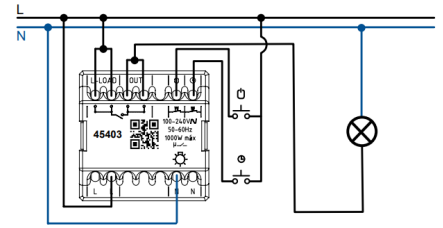
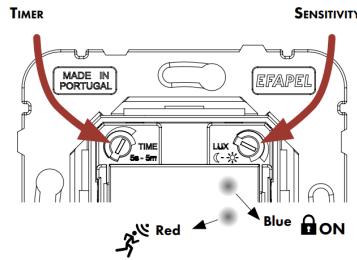
- Allows to command ON / OFF and the regulation of the dimming of a lamp or set of lamps.

CHARACTERISTICS - TECHNICAL

- Power: **100-240V~, 50/60 Hz**;
- Consumption: < 200mW;
- Operating temperature: -10°C to 45°C;
- **Note:** Maximum recommended number of lamps per circuit = 10; In the event of excessive load, short-circuit, inadequate current (dimnable lamps or a mixture of various types of dimmable lamps) - the frontal white LEDs will start flashing.

CHARACTERISTICS - DEVICE

- No need for a neutral line (directly replaces a Single Pole Switch);
- Compatible with RLC circuits (R, RL and RC);
- Allows to control at more than one point (switching circuit) with the use of Rocker switches (NO).
- Four backlight settings:
 - Illuminated - backlighting on with load disconnected and off with load connected;
 - Pilot Lamp - backlighting off with load disconnected and on with load connected;
 - Always ON - backlighting always on;
 - Off - backlighting off.



45403 S – 45404 S

ΑΝΙΧΝΕΥΤΗΣ ΚΙΝΗΣΗΣ

1000W ΚΑΙ 400W

2 MODULE

CONFIGURATION AND OPERATION

- Automatically controls a circuit depending on motion detection and ambient brightness;
- Wall Installation;
- Adjustable light sensitivity;
- Motion detection indicator and front push-button.

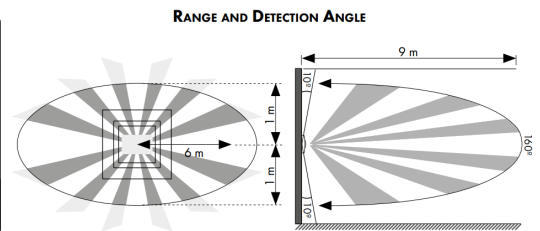
CHARACTERISTICS - TECHNICAL

- Power: **100-240V~, 50/60 Hz;**
- Maximum load:
 - Ref. **45403 S** – 1000W;
 - Ref. **45404 S** – 400W;
- Timing adjustment: 5 seconds to 5 minutes;
- Consumption: < 250mW;
- Operating temperature: -10°C to 45°C.

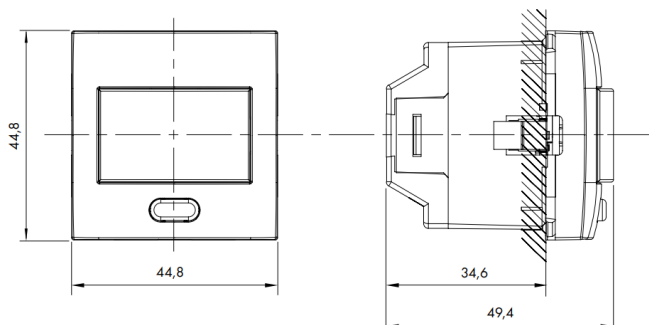
CHARACTERISTICS - DEVICE

- Indication of motion detection in the detector by LED (Red);
- Compatible with any load type (Potential-free output contact - NO);
- Allows control via external inputs with Push-buttons (NO):
 - – starts new timing;
 - – switch to ON Manual mode.

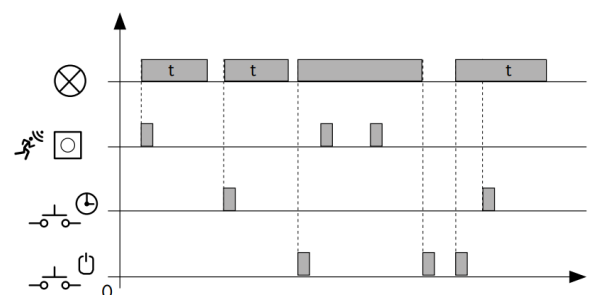
MAXIMUM RECOMMENDED LOADS							
REF.	Voltage - V	Incandescent	Halogen	Ferromagnetic Transformer	Electronic Transformer	Compact	LED
45403 S	100-240V~ 50/60Hz	1000W	1000W	750VA	750VA	500VA	500VA
45404 S	100-240V~ 50/60Hz	400W	400W	300VA	300VA	200VA	200VA



DIMENSIONS (mm)



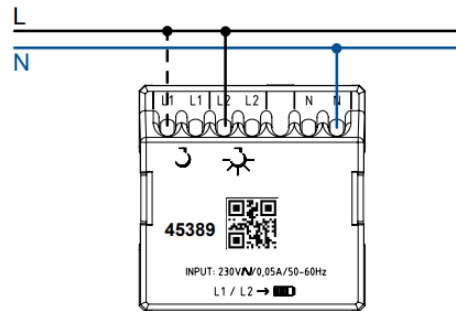
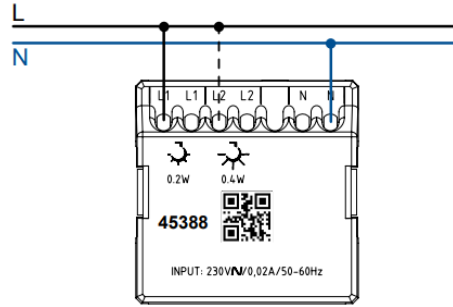
OPERATION DIAGRAM





45388 S – 45389 S

ΕΝΔΕΙΚΤΙΚΟ ΦΩΣ LED 4000K
ΑΠΛΟ ΚΑΙ ΜΕ ΑΥΤΟΝΟΜΙΑ
2 MODULE



OPERATION

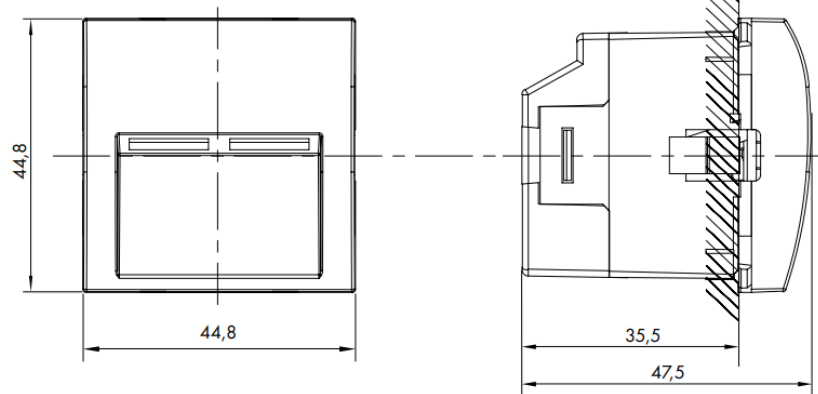
Ref. 45388 S

- Light / Visual Signaling Mechanism with two levels of lighting.;

Ref. 45389 S

- Light / Visual Signaling Mechanism, allows to operate as Orientation Light and Orientation Light with Battery.
- In the event of a power failure, it maintains visual signaling for 1 hour.

DIMENSIONS (mm)

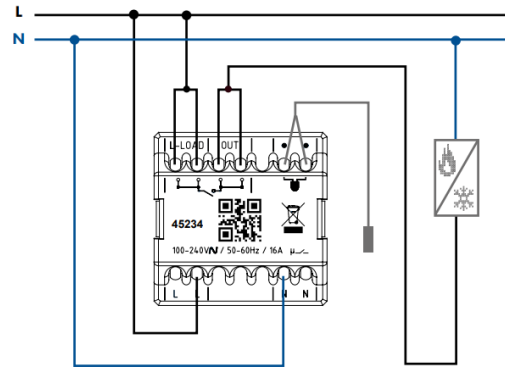
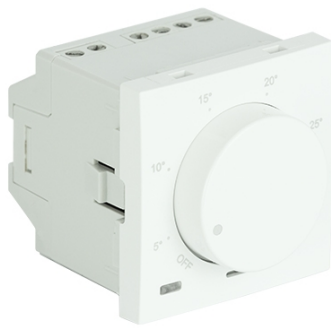


CHARACTERISTICS - Ref. 45388 S

- Power: **230V~**, 50/60 Hz;
- LED signaling;
- Two levels of intensity:
 - L1 – 0,2W;
 - L2 – 0,4W;
- Operating temperature: -10 °C to 45 °C.
- Color temperature: 4000K.

CHARACTERISTICS - Ref. 45389 S

- Power: **230V~**, 50/60 Hz;
- LED signaling;
- Three forms to operate:
 - "L1" – Signaling OFF (turns on only after power failure);
 - "L2" – Signaling ON (always on, until the battery is drained out after a power failure).
 - "L1"+"L2" - Orientation Light and Orientation Light with Battery.
- Charging time: 36 hours;
- Autonomy: 1 hour;
- Operating temperature: -10 °C to 45 °C.



45234 S

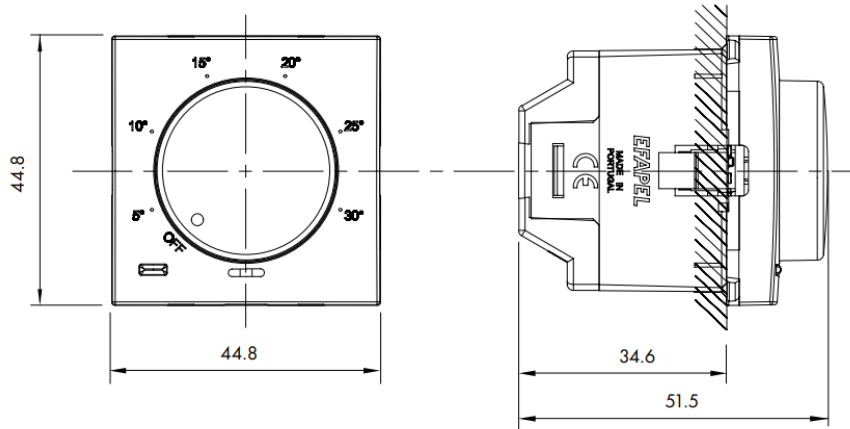
ΘΕΡΜΟΣΤΑΤΗΣ ΧΩΡΟΥ ΠΕΡΙΣΤΡΟΦΙΚΟΣ 2 MODULE

OPERATION

Constant selection and control of the desired ambient temperature through direct push-button setting.

- Red LED – Heating Control;
- Blue LED - Cooling.
- Allows to control of Heating and/or Cooling system depending on the set temperature.
- Compatible with Floor Probe (Ref. 81950) - automatic detection.
- Compatible with electrical and hydraulic systems.

DIMENSIONS (mm)

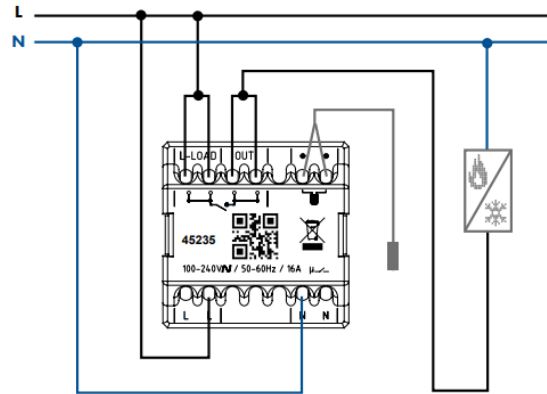


CHARACTERISTICS - TECHNICAL

- Power: **100-240V~, 50/60 Hz**;
- Maximum load: 16A (cosφ = 1);
- Consumption: < 200mW;
- Operating temperature: -10°C to 45°C;
- Temperature settings: +5°C to 30°C;
- Temperature reading range: -9°C to 35°C;
- Output: NO.

CHARACTERISTICS - DEVICE

- System control: Heating and/or Cooling;
- Compatible with Floor Probe (Ref. 81950) - automatic detection;
- Antifreeze Protection (Heating) and Thermal Protection (Cooling);
- Compatible with electrical and hydraulic systems.



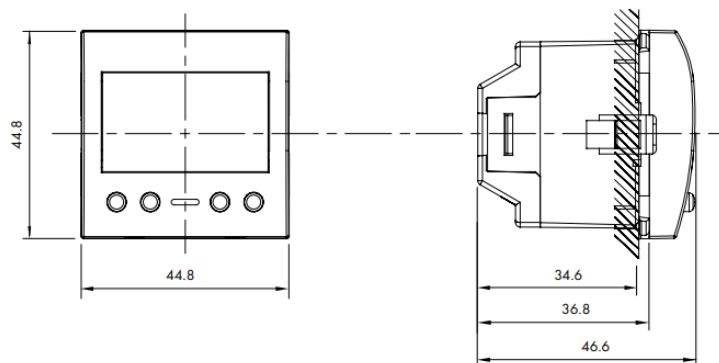
45235 S

ΘΕΡΜΟΣΤΑΤΗΣ ΧΩΡΟΥ ΨΗΦΙΑΚΟΣ ΠΡΟΓΡΑΜΜΑΤΙΖΟΜΕΝΟΣ 2 MODULE

OPERATION

- Programming and control of the desired ambient temperatures for the different periods of the day (up to 7 different temperatures or periods per day) and for the different days of the week.
- Allows the adjustment of different parameters in order to obtain the most appropriate control for the needs of the installation (Climatization Type; Installation Type; Type of Control; Temperature Limits; Differential).
- Allows manual and automatic control of the Heating and Cooling system according to daily/weekly programming and pre-programmed temperatures;
- Compatible with Floor Probe (Ref. 81950) - automatic detection;
- Automatic change of summer/winter time;
- Ability to programme inactive periods (holidays);
- Keys lock function;
- Compatible with electrical and hydraulic systems.

DIMENSIONS (mm)



CHARACTERISTICS - TECHNICAL

- Power: **100-240V~, 50/60 Hz**;
- Maximum load: 16A (cosφ = 1);
- Consumption with backlighting "ON" < 350mW;
- Consumption with backlighting "OFF" < 100mW;
- Operating temperature: -10°C to 45°C;
- Temperature control precision: 0.5°C;
- Temperature reading range: -9°C to 35°C;
- Power reserve up to 24 h;
- Output: NO.

CHARACTERISTICS - DEVICE

- System controls: Heating and/or Cooling;
- Compatible with Floor Probe (Ref. 81950) - automatic detection;
- Temperature reading: Ambient or Floor Probe or both;
- Antifreeze Protection;
- Compatible with electrical and hydraulic systems;
- Valve protection (hydraulic systems);
- Able to plan up to 7 daily periods;
- Keys lock function.



45311 S

ΚΕΝΤΡΙΚΗ ΜΟΝΑΔΑ ΕΛΕΝΧΟΥ ΡΟΛΛΩΝ ΜΕ ΤΗΛΕΧΕΙΡΙΣΜΟ 2 MODULE

OPERATION

- Push button to raise/lower electric shutter.
- Programme two operations for every 24h (only with the General Control).
- Allows general and individual control of shutters or groups of shutters, either manually or automatically, depending on the pre-programmed time or on the surrounding environmental conditions (wind, sun, etc.) defined by associated external sensors.
- Allows local operation;
- Ability to control remotely using the Multifunctions IR Remote Control Transmitter (Ref. 81900);
- Power reserve: 24 hours;
- Ability to receive sensor signals: **100-240V~, 50/60Hz** (PR1 and PR2);
- 2 Programmable functions (Open/Close);
- "Stand-By" function.



45312 S

ΤΟΠΙΚΗ ΜΟΝΑΔΑ ΕΛΕΝΧΟΥ ΡΟΛΛΩΝ ΜΕ ΤΗΛΕΧΕΙΡΙΣΜΟ 2 MODULE

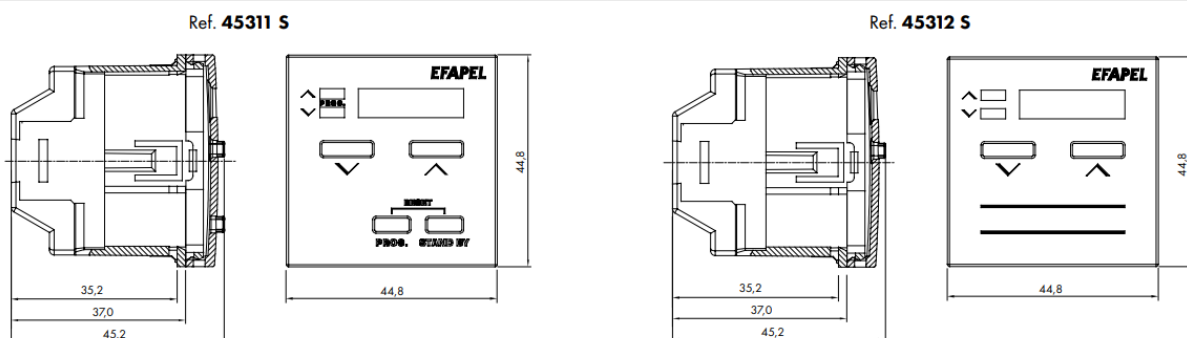
OPERATION

- Push button to raise/lower electric shutter.
- Programme two operations for every 24h (only with the General Control).
- Allows individual control of shutters.
- Allows local operation;
- Ability to control remotely using the Multifunctions IR Remote Control Transmitter (Ref. 81900).

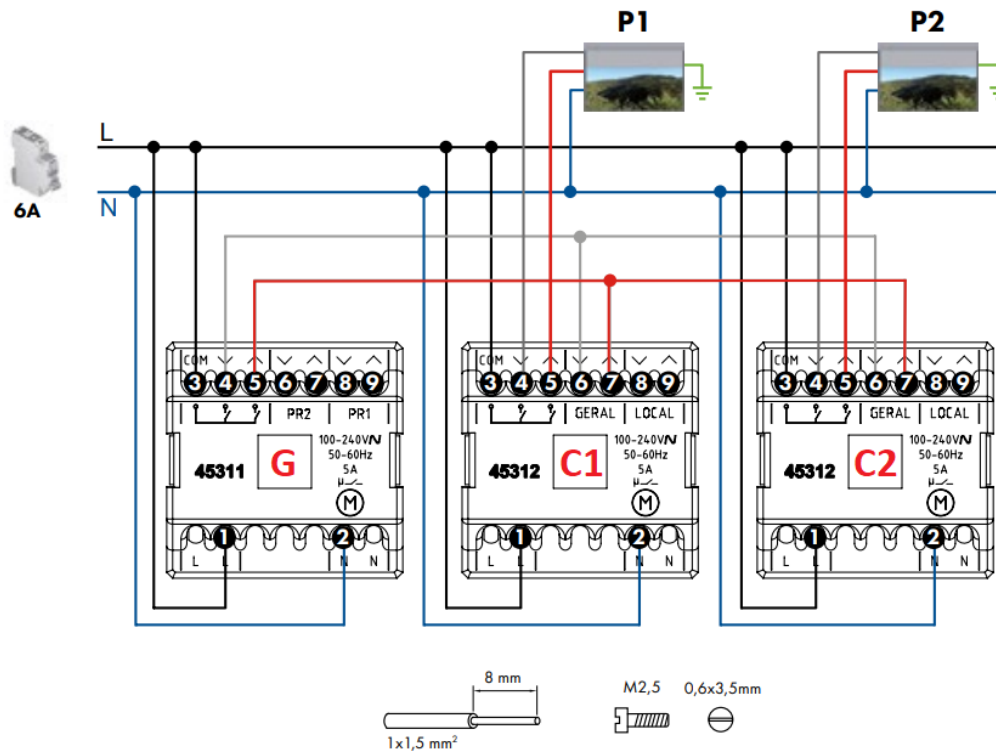
CHARACTERISTICS

- **100-240V~, 50/60Hz** - 5A (cosφ = 1).
- Consumption: < 0,5W.
- Standby consumption: < 0,15W.
- Ability to control locally (Local Control) or remotely using the Multifunctions IR Remote Control Transmitter (Ref. 81900).
- Outputs: NO.
- Potential-free output contact.
- Open and Close time: 90 seconds.

DIMENSIONS (mm)



■ ΣΥΝΔΕΣΜΟΛΟΓΙΑ ΚΕΝΤΡΙΚΗΣ ΜΟΝΑΔΑΣ (G) ΜΕ ΔΥΟ ΕΠΙΜΕΡΟΥΣ ΤΟΠΙΚΕΣ ΜΟΝΑΔΕΣ (C1) ΚΑΙ (C2)



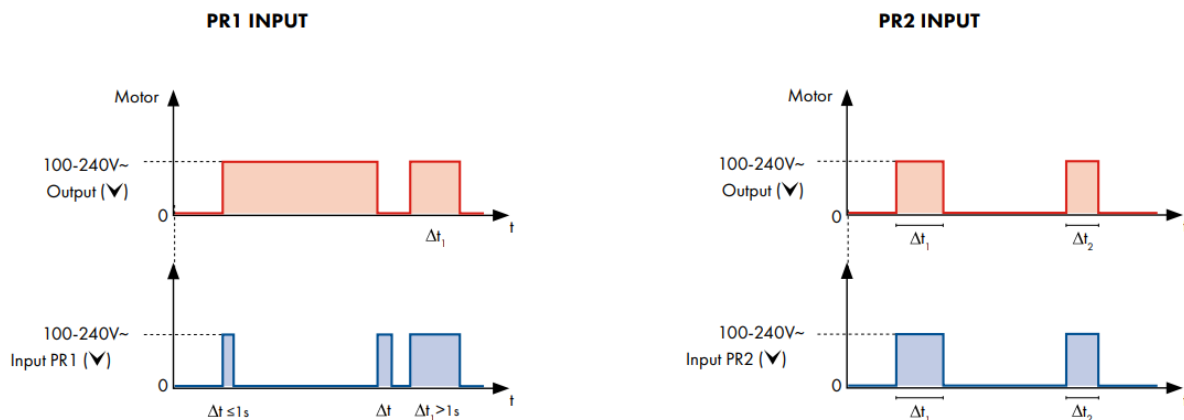
ΚΕΝΤΡΙΚΗ ΜΟΝΑΔΑ (G)

1. Device Power (Line)
2. Device Power (Neutral)
3. Output power (Line)
4. Local Control Output - Lower
5. Local Control Output – Raise
6. Priority signal input 2 (100-240V~) - Lower
7. Priority signal input 2 (100-240V~) - Raise
8. Priority signal input 1 (100-240V~) - Lower
9. Priority signal input 1 (100-240V~) - Raise

ΤΟΠΙΚΗ ΜΟΝΑΔΑ (C1) (C2)

1. Device Power (Line)
2. Device Power (Neutral)
3. Motor Power (Line)
4. Motor Output - Lower
5. Motor Output - Raise
6. General Control signal Input – Lower
7. General Control signal input – Raise
8. Local Control signal inputs (additional) - Lower
9. Local Control signal inputs (additional) - Raise

INPUT OPERATION (E. G. LOWER ∨)



Note: Orders given by direct pressing on the device buttons (∧ ∨) or by devices connected to the priority 1 inputs (Local / PR1), cancel the orders received on the priority 2 inputs (General / PR2).



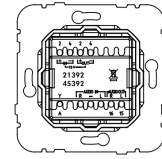
45392 S
ΚΕΝΤΡΙΚΗ ΜΟΝΑΔΑ ΗΧΟΥ
STEREO ΜΕ FM TUNER
2 MODULE

CHARACTERISTICS

PARAMETER	UNIT	MINIMUM	PROVIDED	MAXIMUM	OBS.
POWER SUPPLY					
VOLTAGE	V _{DC}	13,5	15,0	16,5	—
CONSUMPTION	mA	1,0	—	70	STANDBY/ON
AUDIO (AUX)					
INPUT SENSITIVITY	V _{rms}	—	1,0	—	V _{out} = 1,2V
INPUT IMPEDANCE	KΩ	—	30,0	—	—
FREQUENCY RESPONSE	Hz	20	—	<20k	-3dB
FM TUNER (Ref. XX392)					
OUTPUT LEVEL FM	V _{rms}	—	0,7	—	75KHz
FREQUENCY RANGE	MHz	87,5	—	108	—

☞ Audio Input through 3,5mm Jack.

CONNECTIONS



TERMINAL	PARAMETER	
IN	+ (2)	POWER SUPPLY (+) 15V _{DC}
	- (4)	COMMON (-)
OUT	+ (2)	POWER SUPPLY OF SOUND CONTROL UNITS 15V _{DC}
	- (4)	COMMON (-)
AUDIO IN	R	SOUND INPUT RIGHT CHANNEL
	-	SOUND INPUT COMMON
	L	SOUND INPUT LEFT CHANNEL
AUDIO OUT	R	SOUND OUTPUT RIGHT CHANNEL
	L	SOUND OUTPUT LEFT CHANNEL
A		ANTENNA

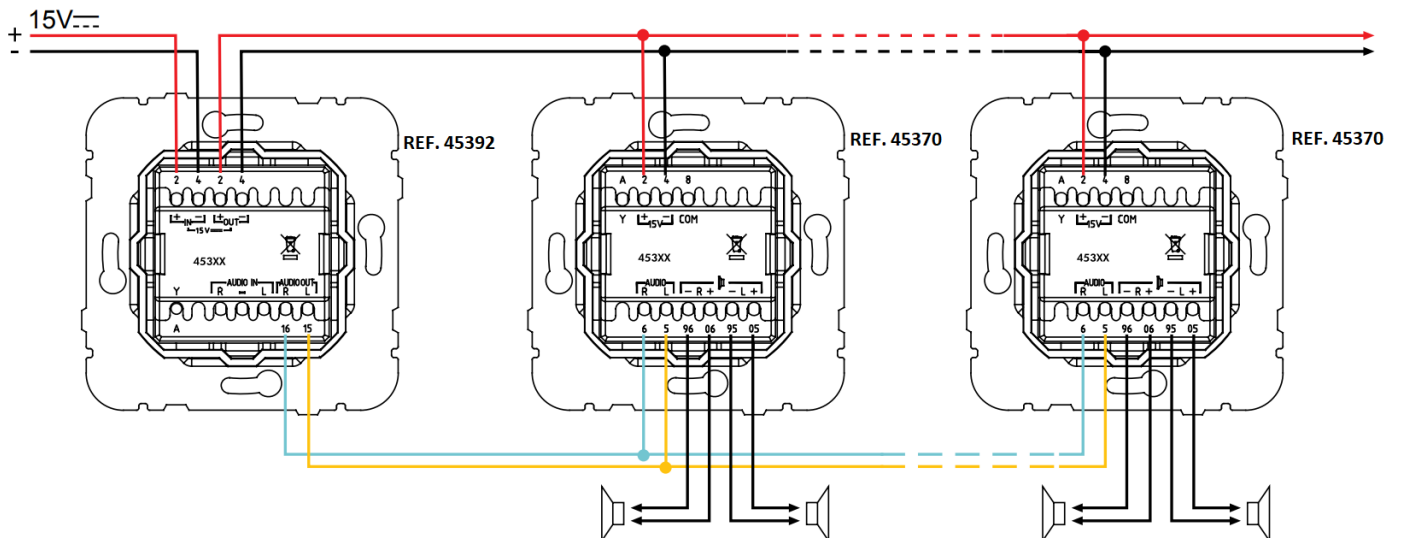


45370 S
ΤΟΠΙΚΗ ΜΟΝΑΔΑ ΗΧΟΥ
STEREO ΜΕ FM TUNER
ΚΑΙ IR CONTROL
2 MODULE

CHARACTERISTICS

PARAMETER	UNIT	MINIMUM	PROVIDED	MAXIMUM	OBS.
POWER SUPPLY					
VOLTAGE	V _{DC}	—	12	18	—
CONSUMPTION	mA	1,5	60	300	STANDBY/ON/ MAXIMUM POWER
AUDIO (AUX)					
INPUT SENSITIVITY	V _{rms}	—	2,0	—	—
INPUT IMPEDANCE	KΩ	—	10	—	—
POWER OUTPUT	W	—	—	1,5 + 1,5	OUTPUT IMPEDANCE- 32Ω
FREQUENCY RESPONSE	Hz	30	—	<20k	-3dB
FM TUNER					
FREQUENCY RANGE	MHz	87,5	—	108	—

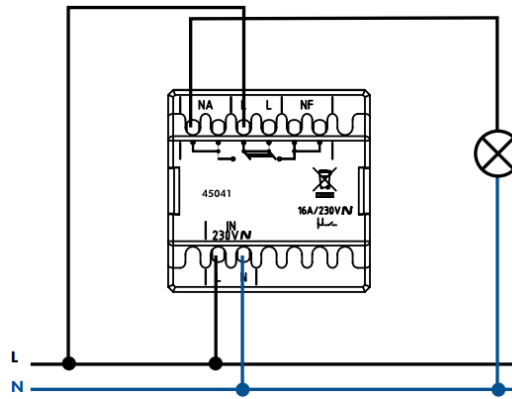
■ ΣΥΝΔΕΣΜΟΛΟΓΙΑ ΚΕΝΤΡΙΚΗΣ ΜΟΝΑΔΑΣ ΗΧΟΥ (45392) ΜΕ ΔΥΟ ΕΠΙΜΕΡΟΥΣ ΤΟΠΙΚΕΣ ΣΤΕΡΕΟ ΜΟΝΑΔΕΣ (45370)





45041 S

ΧΡΟΝΟΔΙΑΚΟΠΤΗΣ ΕΒΔΟΜΑΔΙΑΙΟΣ ΨΗΦΙΑΚΟΣ 2 MODULE



CHARACTERISTICS

- 1 Circuit: 16A (cosφ = 1) - 230V~ - 50/60Hz.
- 2 Circuits: 6A + 6A (cosφ = 1) - 230V~ - 50/60Hz.
- Consumption: < 1W.
- Memory spaces: 24.
- Functions: ON, OFF and PULSE (1 to 59 seconds).
- Programming accuracy: 1 second.
- Operating accuracy: ≤ 1 sec/day.
- Operating temperature: -10°C to +45°C
- Power reserve: 24 hours.
- Outputs: NO + NC.
- Potential-free output contact.

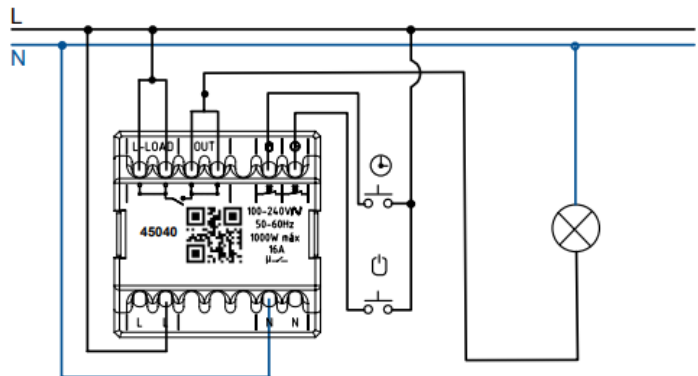
OPERATION

- Manual ON/OFF status switching of each circuit.
- Programmable ON, OFF and PULSE switching (pulses from 1 to 59 seconds) for each circuit independently.
- Allows control of an installation or equipment according to a daily or weekly programme.
- Capable of memorising up to 24 operations.
- Automatic summer/winter time change and idle time programme (holidays).



45040 S

ΧΡΟΝΟΔΙΑΚΟΠΤΗΣ ΜΠΟΥΤΟΝ 2 MODULE

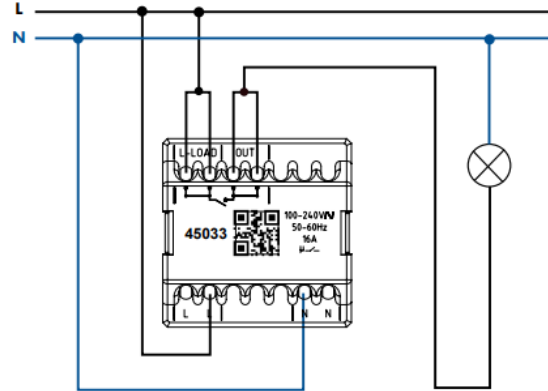


CHARACTERISTICS - TECHNICAL

- Power: 100-240V~, 50/60 Hz;
- Maximum load: 16A (cosφ = 1);
- Operating time regulation: 5 seconds to 15minutes
- Consumption: < 200mW;
- Operating temperature: -10°C to +45°C;
- Compatible with any load type:
 - Outputs: NO or NC;
 - Potential-free output contact.

CHARACTERISTICS - DEVICE

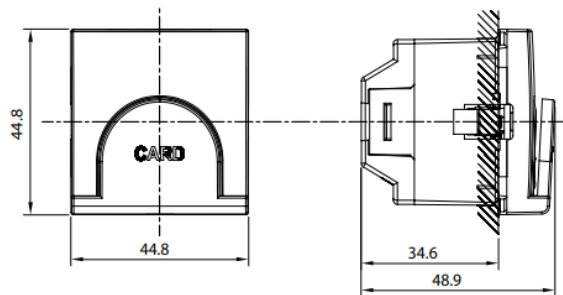
- Allows to control in more than one point (switching circuit) using push-buttons (NO);
- Four backlight settings:
 - Illuminated - backlighting on with load disconnected and off with load connected;
 - Pilot Lamp - backlighting off with load disconnected and on with load connected;
 - Always ON - backlighting always on;
 - Off - backlighting off.



45033 S

ΚΑΡΤΟΔΙΑΚΟΠΤΗΣ ΜΕ ΧΡΟΝΟ 2 MODULE

DIMENSIONS (mm)



OPERATION

- Allows control of a circuit according to the presence of a card in the holder;
- When removing the card from the mechanism, the load remains On / Off for the pre-defined period of time.

CHARACTERISTICS - TECHNICAL

- Power: **100-240V~, 50/60 Hz**;
- Maximum load: 16A ($\cos\phi = 1$);
- Adjustable disconnection delay: 0-60 seconds;
- Consumption: < 200mW;
- Operating temperature: -10°C to +45°C;
- Compatible with any load type:
 - Outputs: NO or NC;
 - Potential-free output contact.

CHARACTERISTICS - DEVICE

- Compatible with any type of bank card (ATM);
- Possibility of inserting a card in the Vertical or Horizontal position;
- Luminous function - whenever a card is inserted, the mechanism remains backlit.